



# BRAZIL BIRDING

E X P E R T S

## PANTANAL FULL TOUR

13 DAYS



*Join us on a journey through the Pantanal, Cerrado, and Amazon - a truly unforgettable adventure! Experience the breathtaking beauty of these diverse habitats as we travel down the Transpantaneira Road, spotting a variety of wildlife and birds along the way. Our destination is Porto Jofre, where we'll have the chance to witness the majestic Jaguar in its natural habitat. But that's not all! We'll also take in the awe-inspiring scenery of the Cerrado at Chapada dos Guimarães and observe the unique birds that call this biome home. Finally, our adventure will come to a close with a taste of the Brazilian Amazon at Jardim da Amazonia. Get ready to capture stunning photos, encounter special birds, and make memories that will last a lifetime.*

# PANTANAL FULL TOUR

(Mato Grosso)

Guide: To be defined.

## SUMMARIZED ITINERARY

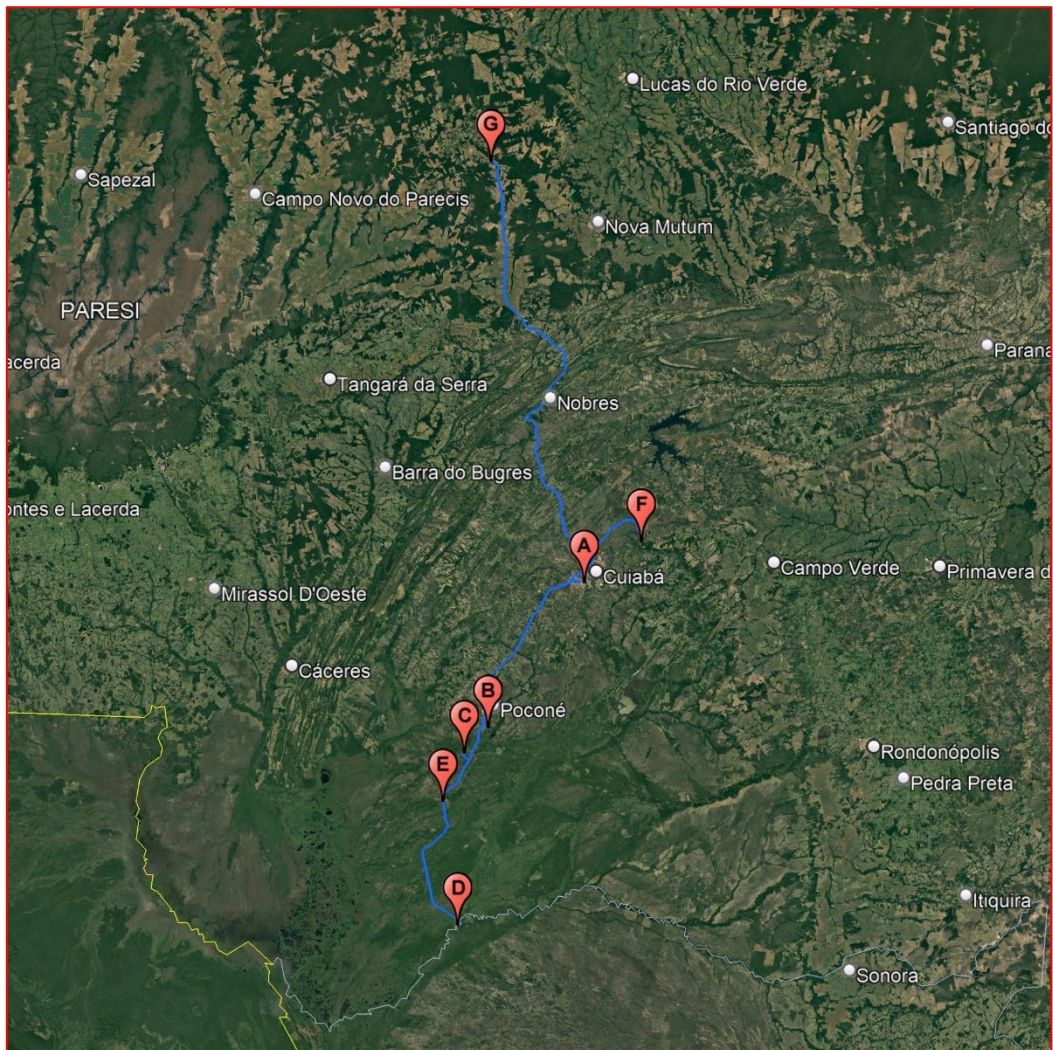
Day	Location (state)	Comments
0	Cuiabá	Arrivals
1	Cuiabá – Transpantaneira Road	Arrivals. Transfer
2	Transpantaneira Road	AM and PM Birding
3	Transpantaneira Road	AM Birding. Transfer. PM Birding
4	Transpantaneira Road – Porto Jofre	AM Birding. Transfer. PM Birding
5	Porto Jofre	AM and PM Birding
6	Porto Jofre – Transpantaneira Road	AM Birding. Transfer. PM Birding
7	Transpantaneira Road – Chapada dos Guimarães	AM Birding. Transfer. PM Birding
8	Chapada dos Guimarães	AM and PM Birding
9	Chapada dos Guimarães – Jardim da Amazônia	AM Birding. Transfer. PM Birding
10	Jardim da Amazônia	AM and PM Birding
11	Jardim da Amazônia	AM and PM Birding
12	Jardim da Amazônia	AM and PM Birding
13	Jardim da Amazônia – Cuiabá	Transfer

**Date: To be defined.**



## OVERVIEW OF THE COMPLETE ITINERARY

Cuiabá (A), Pousada Piuval (B), Pousada Pouso Alegre (C), Hotel Pantanal Norte (D), Hotel Pantanal Mato Grosso (E), Chapada dos Guimarães (F), Pousada Jardim da Amazônia (G), Cuiabá (A).



## DETAILED ITINERARY

**Day 0:** Arrivals in Cuiabá.

**Day 1:** Transfer to Pousada Piuval (+/-2h [120Km]) located in the **TRANSPANTANEIRA ROAD**.

**Area description:** The Transpantaneira Road is a must-see destination for everyone. This remarkable dirt road is teeming with wildlife, providing ample opportunities to capture stunning photos of the flora and fauna. The road is so distracting that it can be challenging to drive continuously during the first few days. Our journey through Pantanal covers around 140km along this incredible road, with stops at unique Pousadas situated on old farms. The road ends at Porto Jofre, where we embark on boat rides to spot the majestic Jaguars.



**Targets:** Greater Rhea (*Rhea americana*), Southern Screamer (*Chauna torquata*), Jabiru (*Jabiru mycteria*), Maguari Stork (*Ciconia maguari*), Black-bellied Whistling-Duck (*Dendrocygna autumnalis*), Muscovy Duck (*Cairina moschata*), Sunbittern (*Eurypyga Helias*), Blue-throated/White-throated Piping-Guan (*Aburria cumanensis grayi*), Pale-crested Woodpecker (*Celeus lugubris*), Bare-faced Ibis (*Phimosus infuscatus*), Black-fronted Nunbird (*Monasa nigrifrons*), White-lored Spinetail (*Synallaxis albilora*), Rufous Cacholote (*Pseudoseisura unirufa*), Great Potoo (*Nyctibius grandis*), Great Horned Owl (*Bubo virginianus*), Long-tailed Ground Dove (*Uropelia campestris*), Undulated Tinamou (*Crypturellus undulatus*), Chestnut-eared Aracari (*Pteroglossus castanotis*) Chestnut-bellied Guan (*Penelope ochrogaster*), Toco Toucan (*Ramphastos toco*), Mato Grosso Antbird (*Cercomacra melanaria*), Giant Cowbird (*Molothrus oryzivorus*), Scarlet-headed Blackbird (*Amblyramphus holosericeus*), Agami Heron (*Agamia agami*), Green-and-rufous Kingfisher (*Chloroceryle inda*), American Pygmy Kingfisher (*Chloroceryle aenea*), Band-tailed Antbird (*Hypocnemoides maculicauda*), Zigzag Heron (*Zebrilus undulatus*), Sungrebe (*Heliornis fulica*), Blue-gray Saltator (*Saltator coerulescens*), Band-tailed Nighthawk (*Nyctiprogne leucopyga*), Anhinga (*Anhinga anhinga*), Black-collared Hawk (*Busarellus nigricollis*), Rusty-backed Spinetail (*Cranioleuca vulpina*).

Please note that due to high demand, the Pousadas we stay at along the Transpantaneira Road in Pantanal may vary based on availability. Typically, we choose from the following options: Pousada Piuval, Pousada Pouso Alegre, Pousada Aymara, Pousada Rio Claro, Hotel Pantanal Mato Grosso, SouthWild (Santa Teresa), Hotel Pantanal Norte, Jaguar Boat Hotel.

Hyacinth Macaw



Agami Heron



Jabiru



**Day 2:** AM and PM Birding in Pousada Piuval.

**Day 3:** Transfer to Pouso Alegre Lodge (+/-1h [30Km]).

**Day 4:** Transfer to **PORTO JOFRE** (+/-3h [120Km]).

**Area description:** This village is situated at the end of the Transpantaneira Road, near the Cuiabá River. This area hosts one of the highest densities of Jaguars in Latin America, with approximately eight individuals per 100km<sup>2</sup>, according to the research conducted by Panthera, an NGO dedicated to jaguar conservation in the region. Today, this location is recognized as one of the best places in the world to capture stunning photographs of Jaguars. As we travel towards Porto Jofre, we will traverse the Transpantaneira Road, which offers excellent opportunities to capture the diverse and breathtaking wildlife of the Pantanal.



**Targets:** Here our star is not a bird, but the majestic Jaguar. We also have chances to see other mammals such as Giant Otters. We will see lots of birds on our way such as the ones cited above.

**Day 5:** AM and PM Birding in **PORTO JOFRE**.

**Day 6:** Transfer to Hotel Pantanal Mato Grosso/ Rio Pixaim (+/-2h [90Km]). Birding along the Transpantaneira Road.

**Day 7:** Transfer to **CHAPADA DOS GUIMARÃES** (+/-3h [170Km]).



**Area Description:** Chapada dos Guimarães is a stunning municipality that sits amidst the breathtaking landscape of the Cerrado biome. This place is home to the Chapada dos Guimarães National Park, which spans almost 33,000 hectares and safeguards a diverse range of Cerrado habitats. Visitors can relish in the picturesque vistas, stunning waterfalls, and unique bird species that call this park home.



**Targets:** Some of the species you can find at Chapada dos Guimarães are Pheasant Cuckoo (*Dromococcyx phasianellus*), Amazonian Motmot (*Momotus momota*), Blue-crowned Trogon (*Trogon curucui*), White Hawk (*Pseudastur albicollis*), Rusty-backed Antwren (*Formicivora rufa*), Collared Crescentchest (*Melanopareia torquata*), White-banded Tanager (*Neothraupis fasciata*), White-rumped Tanager (*Cypsnagra hirundinacea*), Blue Finch (*Porphyrospiza caerulescens*), Horned Sungem (*Heliactin bilophus*), and Red-and-green Macaw (*Ara chloropterus*).

Collared Crescentchest



**Day 8:** AM and PM Birding in Chapada dos Guimarães.

**Day 9:** Transfer to **POUSADA JARDIM DA AMAZÔNIA**. PM Birding.

**Area description:** The Jardim da Amazônia Eco Lodge has gained popularity among bird enthusiasts as it is known to be one of the most ideal locations to spot the rare Cone-billed Tanager (*Conothraupis mesoleuca*). In addition to this special bird, its South Amazonian environment hosts more than 500 bird species. There you will enjoy boat trips, trails and, of course, lots of birds.

**Targets:** Bronzy Jacamar (*Galbula leucogastra*), Black-girdled Barbet (*Capito dayi*), Red-necked Aracari (*Pteroglossus bitorquatus*), Blue-and-yellow Macaw (*Ara ararauna*), Point-tailed Palmcreeper (*Berlepschia rikeri*), Fiery-capped Manakin (*Machaeropterus pyrocephalus*), Bare-necked Fruitcrow (*Gymnoderus foetidus*), Pompadour Cotinga (*Xipholena punicea*), Black-faced Dacnis (*Dacnis lineata*), and many more.



Black-girdled Barbet



Pompadour Cotinga

**Days 10, 11 and 12:** AM and PM Birding in Pousada Jardim da Amazônia.

**Day 13:** Transfer to **CUIABÁ** (+/-3h [170Km]). Departure.

